



The TM-1800.

Technology proven through more tough winters than any other deicer available.

Season after season, through weeks and months of bitter temperatures and the worst blizzards, FMC's TM-1800 has been there -- on ramps around the world.

In fact, it represents the longest continuous production run in the deicing industry.

But, the TM-1800 hasn't stood still, either. Year-in and year-out, its basic field-proven design has been modified to incorporate new technologies and the latest ideas in deicing.

So, it's no surprise to hear, for example, that the U.S. Air Force has deployed

the TM-1800 as its standard deicer around the world.

When aircraft of all configurations have to fly, no matter the weather, the TM-1800's extremely rugged, dependable design helps guarantee safe passage -- without a freeze on schedules.



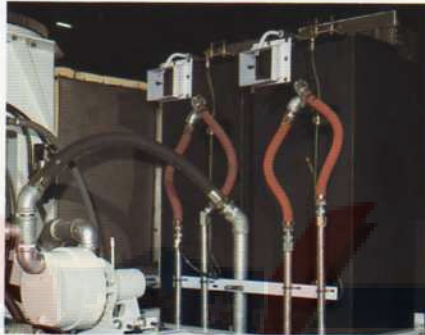
Ford F700 commercial chassis, with gas or diesel engine, provides excellent maneuverability in close to aircraft.



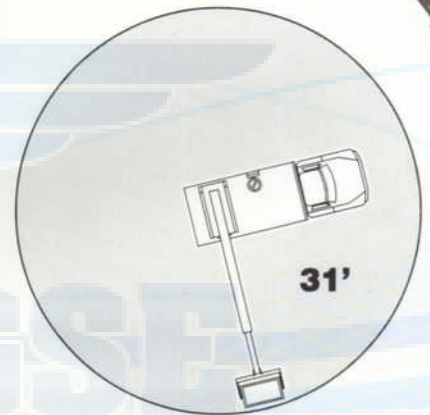
Fluid pressure and flow combinations offer superior reach and removal of heavy ice or snow accumulation.



Rugged, heavy-duty design assures a strong, stable work platform, even with the boom fully extended.



FMC dual heaters with improved ignition provide consistent, smoke free starts and extra reliability with two completely independent units.



Telescoping boom functions with hydraulic yoke movement for extended reach to provide logical operation for faster, easier maneuverability.



1,800-gallon stainless steel fluid system comes with a standard premix system or optional no-delay, at-the-basket proportional mixing (as well as optional Type II fluid capability).



Ground-level-entry basket features proportional boom controls for smooth movement and increased operator comfort and safety.



FMC's Enclosed Cabin Option frees deicing operators from the hazards of harsh weather and fluid sprayback -- in a simple, user-friendly design that matches or surpasses all the operational benefits of any unit available. Talk to your FMC representative for the full details.

Behind the TM-1800: Unmatched FMC Support

Right from the factory, the TM-1800 delivers FMC Dependability.

Behind it stand the engineering and manufacturing experience of a worldwide supplier of ground support equipment... a leader in the aircraft deicer industry for three decades... a company with a reputation for the highest quality and consistent on-time delivery.



And that's only a start. Because FMC Dependability goes onto the ramp, too. With support services unmatched anywhere else. On-site technical servicing everywhere in the world. Specialized spare parts support. Thorough maintenance training courses. Detailed product documentation and up-to-date technical publications. Product-specific and system-specific engineering support.

All of these and more prove "FMC Dependability" is more than a slogan. It's the way we do business.

SPECIFICATIONS

Fluid Tank Capacity	1,800 gal (6,800 L)
Basket Floor Height	42 ft (12.8 m)
Basket Capacity	450 lb (204kg)
Basket Side Reach	31 ft (9.4 m)
Boom Rotation	370 Degree
Boom Type	Telescopic
Heating System	2 FMC Heaters Gasoline, Diesel or Jet-A Fully independent operation for built-in "back-up"
Heater Output	2,000,000 btu/hr (586 kw) total, all fuels
Heating Time	38min., 60 to 180 F nozzle temp heaters running
Fluid Pumps	2-stage centrifugal, 200 F, operation. Oiled for dry operation without damage
Fluid Pumping System Capacity	20 to 110 GPM (76 to 416 LPM), 90 to 200 PSI (6 to 13 Bar)
Ground Gun	FMC 785 with 50 ft (15.2 m) hose
Chassis	FORD F700
Chassis Engines	FORD 429 V8 gas, FNH 170 diesel
Max Speed	50 mph (80 kph)
Turning Radius	30 ft (9.1 m)
Wheelbase	178 in (4.5 m)
Length, Boom Stowed	29 ft 1 in (9.1 m)
Width	8 ft (2.4 m)
Height	12 ft (3.6 m)
Weight, Empty	28,000 lb (12,700 kg)
Auxiliary Engine	FORD 300 6 cyl, Perkins 4.236T

Standard Features

- David Clark headset intercom
- Top window with dual wipers
- Auxiliary boom controls in cab
- Heater indicator lights in cab
- Safety belts and anchors
- Turret mounted nozzle
- Hydraulic test ports
- Pump oilers
- Custom paint, any color

Optional Features

- Proportional mix system for hot water deicing
- Diesel chassis, heaters and auxiliary Perkins engine
- Ground level refillers
- Insulated tanks
- Soap system
- 9KW 220V auxiliary fluid heater
- 220V heater for engine, transmission, batteries and cab
- Low fluid level alarms
- 12V auxiliary hydraulic system
- Auto fire extinguisher system

For more information, contact:

FMC Corporation
Airline Equipment Division
7300 Presidents Drive
Orlando, Florida 32809
(407) 851-3377
Fax: (407) 850-2839
Telex: 6815549 FMCAIR UI

Madrid Office:
FMC Airline Equipment Europe
Carretera de Barcelona
Km. 84,400
Alcalá de Henares
Madrid, Spain
(34) 1-882-9115
Fax: (34) 1-882-9115
Telex: 42828 FMC-E

Singapore Office:
FMC Airline Equipment
75 Airport Cargo Road
Sats Maintenance Centre
Cargo Complex
Singapore Changi Airport
Singapore, 1781
(65) 542-9255
Fax: (65) 542-7493
Telex: 37670 FMCAED

London Office:
FMC Airline Equipment
3rd Floor CI Tower
St. George's Square
New Malden, Surrey KT3 4HG
United Kingdom
(44) 81-942-1999
Fax: (44) 81-942-8880
Telex: 27369